

2019
Standard Product
Price List

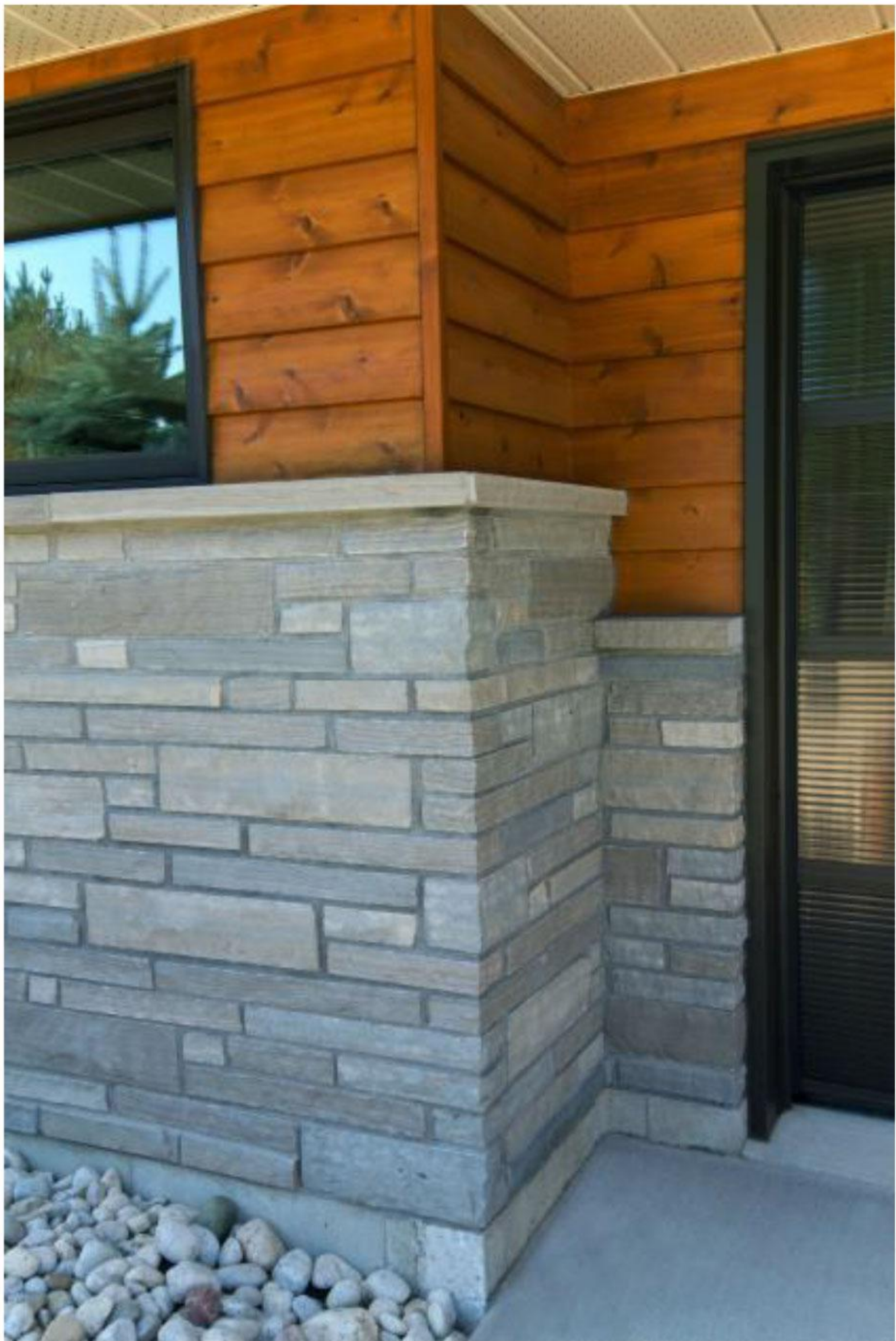


*Natural **stone** products since 1958*



Contacts

CONTACT	TITLE	EXT.	EMAIL
Marlene Zevenbergen	Accounts Receivable/ Credit Department	222	marlene@ledgerock.com
Melissa Sprung	Sales Retail Outlet	(519) 371-4680	melissa@ledgerock.com
Nicole Anderson	Accounts Management Production Coordinator	286	nicole@ledgerock.com
Jason Payne	Dealer Sales	285	jason@ledgerock.com



Contents

4	Flagstone
6	Natural Pavers
8	Erosan Pavers™
10	Eramosa Flamed Pavers
12	Treads and Coping
14	Steps
16	Sills
18	Ledgerock—Natural Bed
20	Ledgerock—Sawn Bed
22	Drywall—Standard
24	Drywall—Dimensional
26	Landscape Stone
28	Tile
30	ASTM Reports
32	Packaging
34	Sample Request

Flagstone



Most commonly used for exterior patios and walkways, flagstone can also be used for interior installations of wall veneer or flooring.

Random Buff Flagstone

Random broken shapes with natural cleft surface top and bottom. Sizes typically range from 1 to 4 square feet each. Specify stone type, thickness and quantity required when ordering.

Thickness	Cost per Ton	Approximate Coverage per SQ.FT.	Slabs
3/8"		400	
1/2"		250 to 300	
3/4"		160 to 200	
1" to 1 1/4"		130	
1 1/2" to 1 3/4"		100	
2" +		50	



Random Black Flagstone

Random broken shapes with natural cleft surface top and bottom. Sizes typically range from 1 to 4 square feet each. Specify stone type, thickness and quantity required when ordering.

Thickness	Cost per Ton	Approximate Coverage per SQ.FT.	Slabs
3/4"		160 to 200	
1" to 1 1/4"		130	
1 1/2" to 1 3/4"		100	
2" +		50	



Pavers



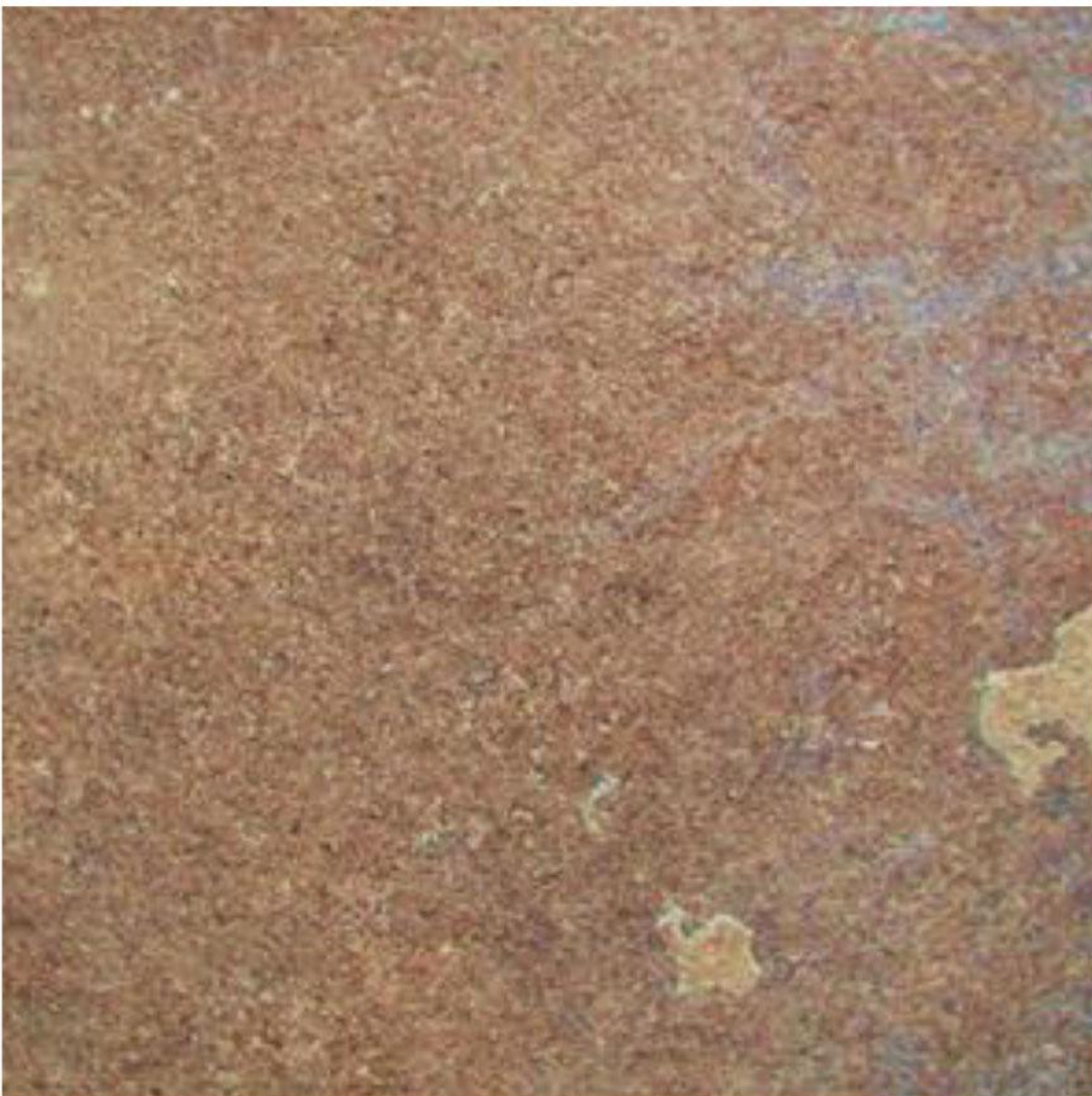
Commonly used for exterior patios and walkways. Can be used inside, ask sales consultant for details.

Paving Stone

Paving stone is available in a variety of different stone types and finishes. Standard pavers are cut with a 3/8" joint allowance applied. Any paver cut to sizes other than listed, or require a full size cut, are considered custom. Please call for pricing on all custom cut pavers. Please specify material type, finish and quantity required when ordering.

NATURAL FLAGSTONE PAVERS

Natural pavers are produced from natural layers of Buff Flagstone and Black Flagstone. Slabs are sawn into cubes and split along natural veins, which will range from 1" to 2" in thickness and will be packed within that range. Top and bottom finish will be natural, with all other edges sawn.



Buff Flagstone and Black Flagstone

Thickness	Width	Length	Cost per Sq.Ft.
.5" to .75"	12", 18", 24"	12", 18", 24"	
1" to 2"	12", 18", 24"	12", 18", 24"	
1" to 2"	12", 18",	30", 36"	
1" to 2"	24"	30", 36"	

Erosan Pavers™



Commonly used for exterior patios and walkways. Can be used inside, ask sales consultant for details.

Erosan Pavers™

Materials are sawn to specific thickness and top is finished per choices below. Bottom and all other edges are sawn. Standard pavers are cut with a 3/8" joint allowance applied.



Thickness	Width	Length	Cost per Sq.Ft.
1"	12", 18", 24"	12", 18", 24"	
1"	12", 18", 24"	30", 36"	
1"	30", 36"	30", 36"	
2"	12", 18", 24"	12", 18", 24"	
2"	12", 18", 24"	30", 36", 48"	
2"	30", 36"	30", 36", 48"	

Eramosa Flamed Pavers



Commonly used for exterior patios and walkways. Can be used inside, ask sales consultant for details.

Eramosa Flamed Pavers

Materials are sawn to specific thickness and top is finished per choices below. Bottom and all other edges are sawn. Standard pavers are cut with a 3/8" joint allowance applied.



Thickness	Width	Length	Cost per Sq.Ft.
1"	12", 18", 24"	12", 18", 24"	
1"	12", 18", 24"	30", 36"	
1"	30", 36"	30", 36"	
2"	12", 18", 24"	12", 18", 24"	
2"	12", 18", 24"	30", 36", 48"	
2"	30", 36"	30", 36", 48"	

Treads and Coping



Most commonly used for exterior wall capping or stair treads. Stone copings, being a natural product, will always vary in colour, texture, and pattern.

Treads and Coping

Standard treads and coping are produced from a variety of stone types and textured surfaces. Please specify stone type, all dimensional information, finish and quantities required when ordering.

All standard treads and coping include one edge finished at no extra charge.

Erosan™ (Sandblasted Eramosa)



Front Edge Finish	Thickness	Width	Length	Cost Per Square Foot
Rock Faced	2"	12", 14" or 16"	36" to 72"	
Bullnosed	2"	12", 14" or 16"	36" to 72"	
	2"	"	>72"	

Flamed Eramosa



Front Edge Finish	Thickness	Width	Length	Cost Per Square Foot
Rock Faced	2"	12", 14" or 16"	36" to 72"	
Bullnosed	2"	12", 14" or 16"	36" to 72"	
	2"	"	>72"	

Natural Buff Flagstone



Front Edge Finish	Thickness	Width	Length	Cost Per Square Foot
Rock Faced	2"	12", 14" or 16"	36" to 72"	
	2"	"	>72"	

Steps



Most commonly used for exterior stair applications. Stone steps, being a natural product, will vary in colour, texture, and pattern.

Steps

Standard steps are produced from a variety of stone types with natural and textured surfaces applied. All standard steps will have a rockface finish applied to the front edge. Please specify stone type, all dimensional information, top and edge finishes and quantities required when ordering. No extra charge will be applied for additional finished edges to standard steps.

Erosan™ (Sandblasted Eramosa)



Thickness	Width	Length	Cost Per Square Foot
6"	16"	36" to 72"	
6"	16"	> 72"	
7"	16"	36" to 72"	
7"	16"	> 72"	

Flamed Eramosa



Thickness	Width	Length	Cost Per Square Foot
6"	16"	36" to 72"	
6"	16"	> 72"	
7"	16"	36" to 72"	
7"	16"	> 72"	

Natural Surface



Thickness	Width	Length	Cost Per Square Foot
2 1/4" to 5 3/4"	16"	36" to 72"	
2 1/4" to 5 3/4"	16"	> 72"	
6" to 8"	16"	36" to 72"	
6" to 8"	16"	> 72"	

Sills



Sills

All standard sills are produced with sawn top and bottom edges. Front edge will be rockfaced. All other edges sawn. Drip cut will be applied to all standard sills. Please specify stone type, all dimensional information and quantities required when ordering.

WIARTON SILLS

Sills are produced from either Eramosa or Wiarton materials. Please specify colour or type of stone required with order.



Thickness	Width	Length	Cost per Ln.Ft.
2 1/4"	6"	24" to 72"	
2 1/4"	6"	> 72"	
4"	6"	24" to 72"	
4"	6"	> 72"	

Ledgerrock—Natural Bed



Natural Bed Ledgerrock

Natural bed ledgerrock is split from natural layer slabs using several stone types. Top and bottom beds are typically uneven and create an informal, rustic look. Lengths are random and broken. Approximate coverage is 40 to 45 square feet per ton. Please specify the colours (stone types), ratio of each face height and quantities required when ordering blend specific to your needs. Other materials are available for highlight purposes. Information and costs are available upon request. Prices based on full skid quantities only.



Wiarthon Brown/Grey/Buf

Face Height	Bed Width	Length	Cost Per Ton
2" to 8"	4"	Random	
9" +	4"	Random	



Owen Sound

Face Height	Bed Width	Length	Cost Per Ton
2" to 8"	4"	Random	



Ledgerrock—Sawn Bed

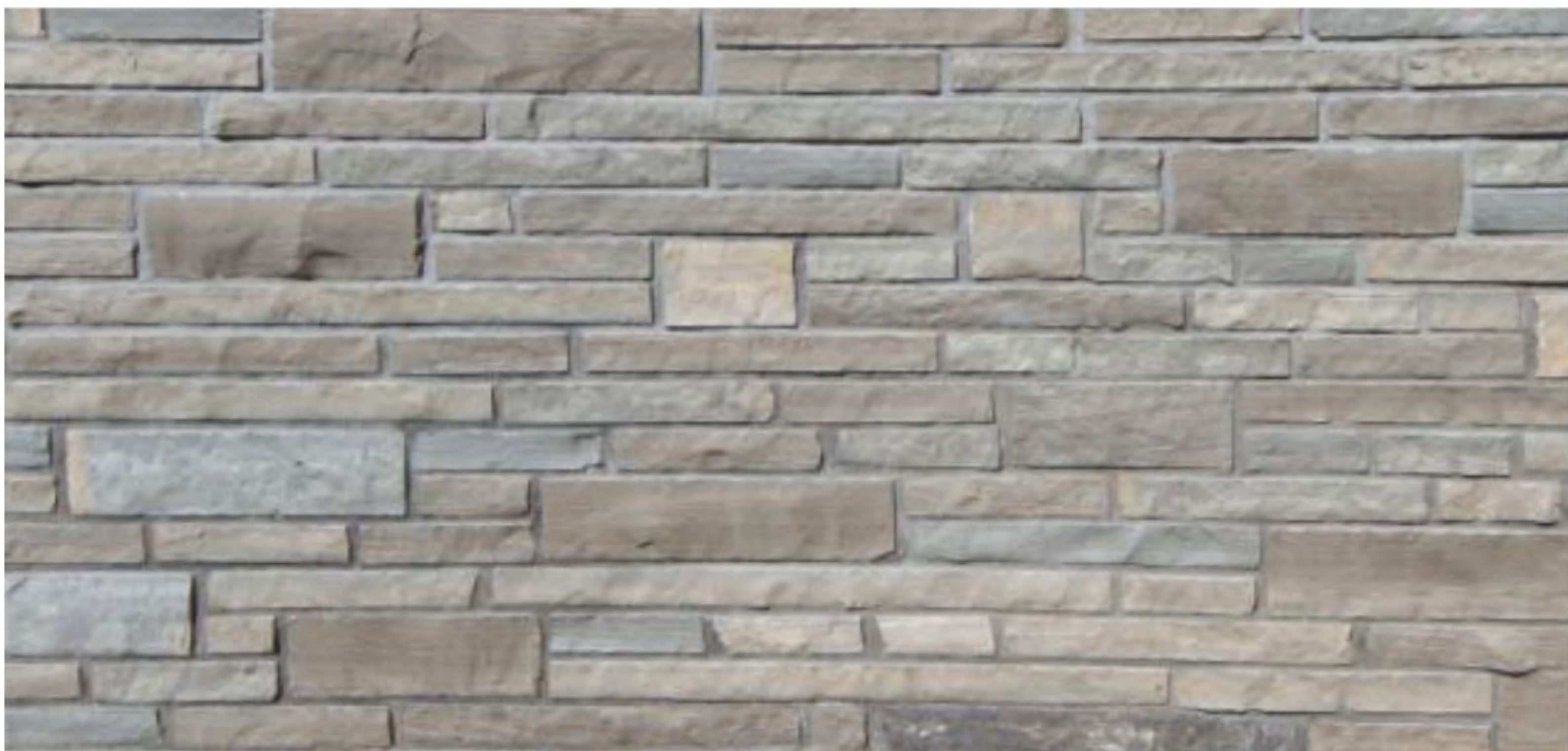


Sawn Bed Ledgerrock

Sawn Bed Ledgerrock is split from slabs sawn to specific face heights using blocks of several stone types. Top and bottom beds are sawn flat to create a formal or linear pattern. Lengths are random and broken. Approximate coverage is 40 to 45 square feet per ton. Please specify colours (stone types), ratio of each face height and quantities required when ordering. Face heights listed are standard sizes. Any other face heights are considered custom and will require a custom quote. Please call for pricing.

Sizes Available: 2 1/4", 5", 7 3/4", 10 1/2"

Material	Cost Per Ton
Wiarthon Grey/ Brown	
Eramosa Mix	
Hope Bay	
Senesun	
Strata Bed Face	
Strata Split Face	
Algonquin	
Indiana	CALL
Mavise	Call



Drywall—Standard



Standard Drywall

Natural cleft surface, top and bottom. Random broken shapes produced from natural layers. For dry stacking or mortared retaining wall construction. Also apply for “five point” wall applications. Approximate coverage is 20 square feet per ton.

Wiarthon

Face Height	Cost Per Ton
-------------	--------------

2” to 8”



Owen Sound

Face Height	Cost Per Ton
-------------	--------------

1” to 1 1/4”

1 1/2” to 1 3/4”	
------------------	--

2”-3”



Drywall—Dimensional



Natural Dimensional Drywall

Natural dimensional drywall is split from natural layers. Top and bottom beds are natural with front and back edges split. Lengths are random with broken ends. Specify material, face height and quantities when ordering. Approximate coverage is 20 square feet per ton. Prices based on full skid quantities only.

Wiarnton



Thickness	Width	Length	Cost Per Ton
2" to 3"	8"	Random	
3" to 4"	8"	Random	
5" to 6"	8"	Random	
8"	12"	Random	

Owen Sound



Thickness	Width	Length	Cost Per Ton
2" to 3"	8"	Random	
3" to 4"	8"	Random	
5" to 6"	8"	Random	

Sawn Dimensional Drywall

Sawn Dimensional Drywall is split from slabs sawn to specific face heights using blocks of several stone types. Top and bottom beds are sawn. Front and back edges are split. Lengths are random with broken ends. Specify material type, thickness and quantities required when placing order. Any orders requiring in excess of 10% of 2" Eramosa or Hope Bay™ material will carry a charge of an extra
Prices based on full skid quantities only.

Eramosa

Thickness	Width	Length	Cost Per Ton
2", 4", 6", 8"	8"	Random	

Hope Bay™

Thickness	Width	Length	Cost Per Ton
2", 4", 6", 8"	8"	Random	

Strata

Thickness	Width	Length	Cost Per Ton
2", 4", 6", 8"	8"	Random	

Landscape Stone



Armour Stone Retaining/Seat Wall

Armour stone retaining/seat wall will have at least one natural surface edge. All other edges will be sawn or guillotined, as required. Cost associated to order will be dependent on the requirements. Any orders requiring custom cuts, specific angles or radial designs, will require a quote to be produced. Specifications and drawings will be required to assess scope of project prior to pricing. Please forward as much information in regards to cuts and finishes when ordering any retaining/seat wall products.



	Thickness	Width	Length	Cost Per Ton
As Pulled	16" to 24"	24" to 30"	24" to 72"	
Sawn Ends w/random	16" to 24"	24" to 30"	24" to 72"	
Sawn Ends w/specific	16" to 24"	24" to 30"	24" to 72"	

Strata Retaining/Seat Wall

Strata retaining/seat wall will have a natural top or front with all other edges sawn. Pricing is for straight cut materials only. Any orders requiring custom cuts, please see Armour Stone notes above.



	Thickness	Width	Length	Cost Per Ton
Misc Lengths	12"	12"	24" to 72"	
Sawn Ends w/random lengths	16" to 24"	24" to 30"	24" to 72"	
Sawn Ends w/specific lengths	16" to 24"	24" to 30"	24" to 72"	

Waterfall Stone

Waterfall Stone is produced from natural limestone slabs or chunks with weathered or broken edges. Sawn widths and lengths are available upon request. Material is available in either buff or black.



	Thickness	Width	Length	Cost Per Ton
As Pulled	Random	Random	Random	
Sawn to Dimension	TBD	TBD	TBD	

Natural Boulders



	Thickness	Width	Length	Cost Per Ton
500 to 6000lbs	Random	Random	Random	

Tile

Materials are sawn to specific thickness and top is finished to either Honed or Polished. Bottom and all other edges are sawn. Standard are cut to full size. If a joint is required specify at the time of order.

Eramosa Fleuri



Thickness	Width	Length	Cost Per Sq.Ft.
3/8"	6", 12", 18", 24"	12", 18", 24"	
1/2"	6", 12", 18", 24"	12", 18", 24"	
3/4"	6", 12", 18", 24"	12", 18", 24"	

Eramosa Vein



Thickness	Width	Length	Cost Per Sq.Ft.
3/8"	6", 12"	12", 18", 24"	
1/2"	6", 12"	12", 18", 24"	
3/4"	6", 12"	12"	
3/4"	18", 24"	18", 24"	

Algonquin Fleuri



Thickness	Width	Length	Cost Per Sq.Ft.
3/8"	6", 12", 18", 24"	12", 18", 24"	
1/2"	6", 12", 18", 24"	12", 18", 24"	
3/4"	6", 12", 18", 24"	12", 18", 24"	

Algonquin Vein



Thickness	Width	Length	Cost Per Sq.Ft.
3/8"	6", 12"	12", 18", 24"	
1/2"	6", 12"	12", 18", 24"	
3/4"	6", 12"	12", 18", 24"	

Hope Bay™



Thickness	Width	Length	Cost Per Sq.Ft.
3/8"	6", 12", 18", 24"	12", 18", 24"	N/A
1/2"	6", 12", 18", 24"	12", 18", 24"	
3/4"	6", 12", 18", 24"	12", 18", 24"	

Indiana Buff



Thickness	Width	Length	Cost Per Sq.Ft.
3/8"	6", 12", 18", 24"	12", 18", 24"	
1/2"	6", 12", 18", 24"	12", 18", 24"	
3/4"	6", 12", 18", 24"	12", 18", 24"	

Mavise



Thickness	Width	Length	Cost Per Sq.Ft.
3/8"	6", 12", 18", 24"	12", 18", 24"	
1/2"	6", 12", 18", 24"	12", 18", 24"	
3/4"	6", 12", 18", 24"	12", 18", 24"	

ASTM Reports

PHYSICAL TEST DATA

Tests were performed as per the specific requirements to meet the standards of ASTM C568 – Standard Specification for Limestone Dimension Stone.

<u>ALGONQUIN LIMESTONE</u>	
Density	156.7 lbs./cu.ft.
Compressive Strength	22, 729 psi
Abrasion Resistance	Not Tested
Absorption	2.27%
Modulus of Rupture	1,823 psi

<u>ERAMOSA LIMESTONE</u>	
Density	170.4 lbs./cu.ft.
Compressive Strength	30,508 psi
Abrasion Resistance	Not Tested
Absorption	0.5 %
Modulus of Rupture	1900 psi

<u>HOPE BAY LIMESTONE</u>	
Density	154.8 lbs./cu.ft.
Compressive Strength	12,387 psi
Abrasion Resistance	Not Tested
Absorption	2.49%
Modulus of Rupture	855 psi

<u>MARA LIMESTONE</u>	
Density	172 lbs./cu.ft.
Compressive Strength	24,372 psi
Abrasion Resistance	Not Tested
Absorption	.95 %
Modulus of Rupture	2,804 psi

<u>BUFF STRATA LIMESTONE</u>	NATURAL SURFACE
Density	168.6 lbs./cu.ft.
Compressive Strength	6,043 psi
Abrasion Resistance	Not Tested
Absorption	1.10 %
Modulus of Rupture	1,039 psi

<u>GREY STRATA LIMESTONE</u>	NATURAL SURFACE
Density	168.6 lbs./cu.ft.
Compressive Strength	6,043 psi
Abrasion Resistance	Not Tested
Absorption	1.10 %
Modulus of Rupture	1,039 psi